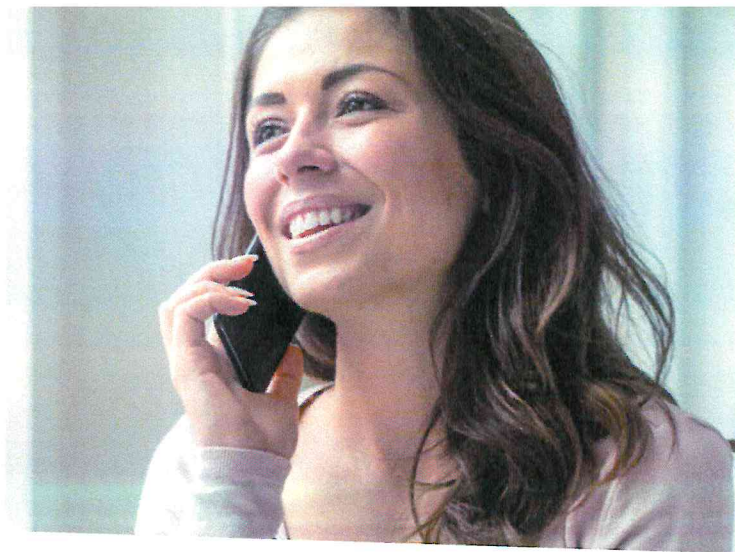


A caring team to help guide you

Anthem Health Guide is a concierge service for your health and health care



Health care benefits can seem complicated or confusing at times. To make the most of your benefits, you need to understand them. That is why you have a team of concierge-level customer service experts — ready to answer questions, advocate for your health and explain how to use your benefits. You can call a health guide or chat from your mobile device using our Sydney Health app.

Anthem health guides are here to help

Health guides are team members hand-picked for their kindness and understanding, their ability to listen and find a solution, all while also helping you feel less overwhelmed. They are experts at:

- **One-call resolution.** Our guides use advanced technology to see your whole health care picture while talking to you or advocating for you. They understand you are busy and may not have time for multiple conversations so they find the solution in the first call. Health guides take a comprehensive and personal approach, not only to help with your immediate needs but also anticipate future questions.
- **Advocating for you.** Health guides bring knowledge and experience to help make sure you are receiving the care you need. They will help break down barriers and eliminate “homework” for you, like calling providers about billing discrepancies, so you can focus on your health. If you need help finding a provider, guides can match you with an in-network provider that suits your needs. They can also help you save money by comparing costs for care at different hospitals.
- **Coordinating care for better health.** Many people see more than one doctor. Health guides can connect you to health professionals who will help coordinate with doctors and other members of your care team. They can remind you of important preventive care, and even help schedule appointments for you, when possible. They also have in-depth knowledge about the programs and preventive care services that are part of your benefits, and they work closely with nurses, health coaches and social workers to provide support uniquely suited to you.

Anthem Health Guide is here to give you personalized help when you need it most. That way you can focus on what is most important: your health.

Sydney Care is offered through an arrangement with CareMarket, Inc. Sydney Health and Sydney Care are service marks of CareMarket, Inc. ©2020 Anthem Blue Cross and Blue Shield is the trade name of: In Colorado, Rocky Mountain Hospital and Medical Service, Inc. HMO products underwritten by HMO Colorado, Inc. Copies of Colorado network access plans are available on request from member services or can be obtained by going to anthem.com/cal/networkaccess. In Connecticut, Anthem Health Plans, Inc. In Georgia, Blue Cross Blue Shield Healthcare Plan of Georgia, Inc. In Indiana, Anthem Insurance Companies, Inc. In Kentucky, Anthem Health Plans of Kentucky, Inc. In Maine, Anthem Health Plans of Maine, Inc. In Missouri (excluding 30 counties in the Kansas City area), RightCHOICESM Managed Care, Inc. (RIT), Healthy AllianceSM Life Insurance Company (HALIC) and HMO Missouri, Inc. RIT and certain affiliates only provide administrative services for self-funded plans and do not underwrite benefits. In Nevada, Rocky Mountain Hospital and Medical Service, Inc. HMO products underwritten by HMO Colorado, Inc. aka HMO Nevada. In New Hampshire, Anthem Health Plans of New Hampshire, Inc. HMO plans are administered by Anthem Health Plans of New Hampshire, Inc. and underwritten by Matthew Thornton Health Plan, Inc. In Ohio, Community Insurance Company. In Virginia, Anthem Health Plans of Virginia, Inc. trades as Anthem Blue Cross and Blue Shield in Virginia, and its service area is all of Virginia except for the City of Fairfax, the Town of Vienna, and the area east of State Route 123. In Wisconsin, Blue Cross Blue Shield of Wisconsin (BCBSWI) underwrites or administers PPO and indemnity policies and underwrites the out of network benefits in PDS policies offered by Concierge Health Services Insurance Corporation (Concierge) or Wisconsin Collaborative Insurance Corporation (WCIC). Concierge underwrites or administers HMO or PDS policies. WCIC underwrites or administers Well Priority HMO or PDS policies. Independent licensees of the Blue Cross and Blue Shield Association. Anthem is a registered trademark of Anthem Insurance Companies, Inc.

Reach out to an Anthem Health Guide

Connect from your Anthem Blue Cross and Blue Shield Sydney Health mobile app or by logging in at anthem.com. Then choose **Customer Support**, then **Contact Us**.

Call us at **844-940-1997**, Monday to Friday.